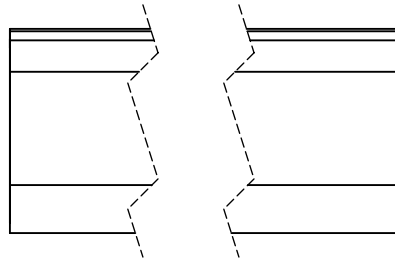
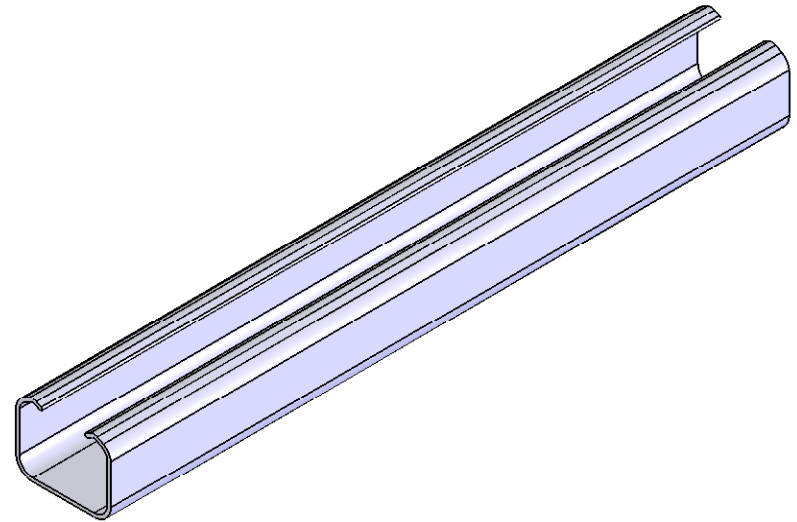
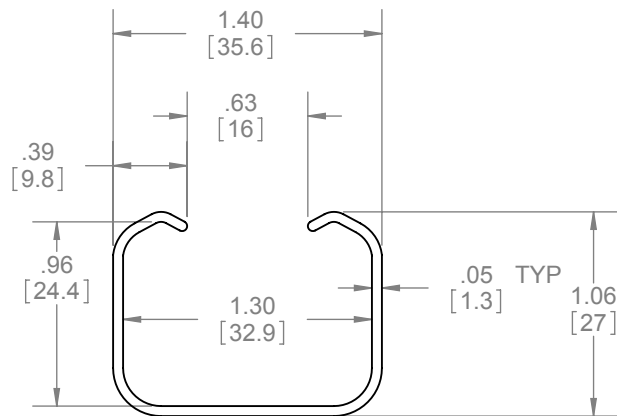


REV.	DESCRIPTION	ECO NO.	DATE
01	NEW DRAWING FOR WEB		3/19/2008



NOTES:  
 - WEIGHT CAPACITY BASED ON SLIDING DOOR  
 HARDWARE USED  
 - MAX DOOR WEIGHT 150LBS.  
 - JUMP PROOF TWIN CHANNEL DESIGN

LENGTHS:  
 - 35" (889mm) TO 144" (3657mm)



**PROPRIETARY & CONFIDENTIAL**  
 THE INFORMATION CONTAINED  
 IN THIS DRAWING IS THE SOLE  
 PROPERTY OF HAGER  
 COMPANIES. ANY REPRODUCTION  
 IN PART OR AS A WHOLE WITHOUT  
 THE WRITTEN PERMISSION OF  
 HAGER COMPANIES IS PROHIBITED.

HAGER RESERVES  
 THE RIGHT TO  
 MAKE DESIGN  
 CHANGES  
 WITHOUT NOTICE.  
 CALL HAGER  
 ENGINEERING AT  
 1-800-325-9995  
 FOR THE LATEST  
 REVISION DATE  
 OF TEMPLATE.

MATERIAL	ALUMINUM	DRAWN	NJANSEN	2/7/2008	9601 ALUMINUM BOX TRACK		
	FINISH	CLEAR	ENG. APPR.	M MCRAE			3/19/2008
DO NOT SCALE DRAWING		TOLERANCES: FRACTIONAL: $\pm 0.015"$ ANGULAR: MACH: $\pm 1^\circ$ BEND: $\pm 1^\circ$ TWO PLACE DECIMAL: $\pm 0.01"$ THREE PLACE DECIMAL: $\pm 0.004"$		Q.A.	SIZE	DWG. NO.	REV.
					A	S-SD00063	01
					SCALE: 1:4	WEIGHT: 0.19	SHEET 1 OF 1